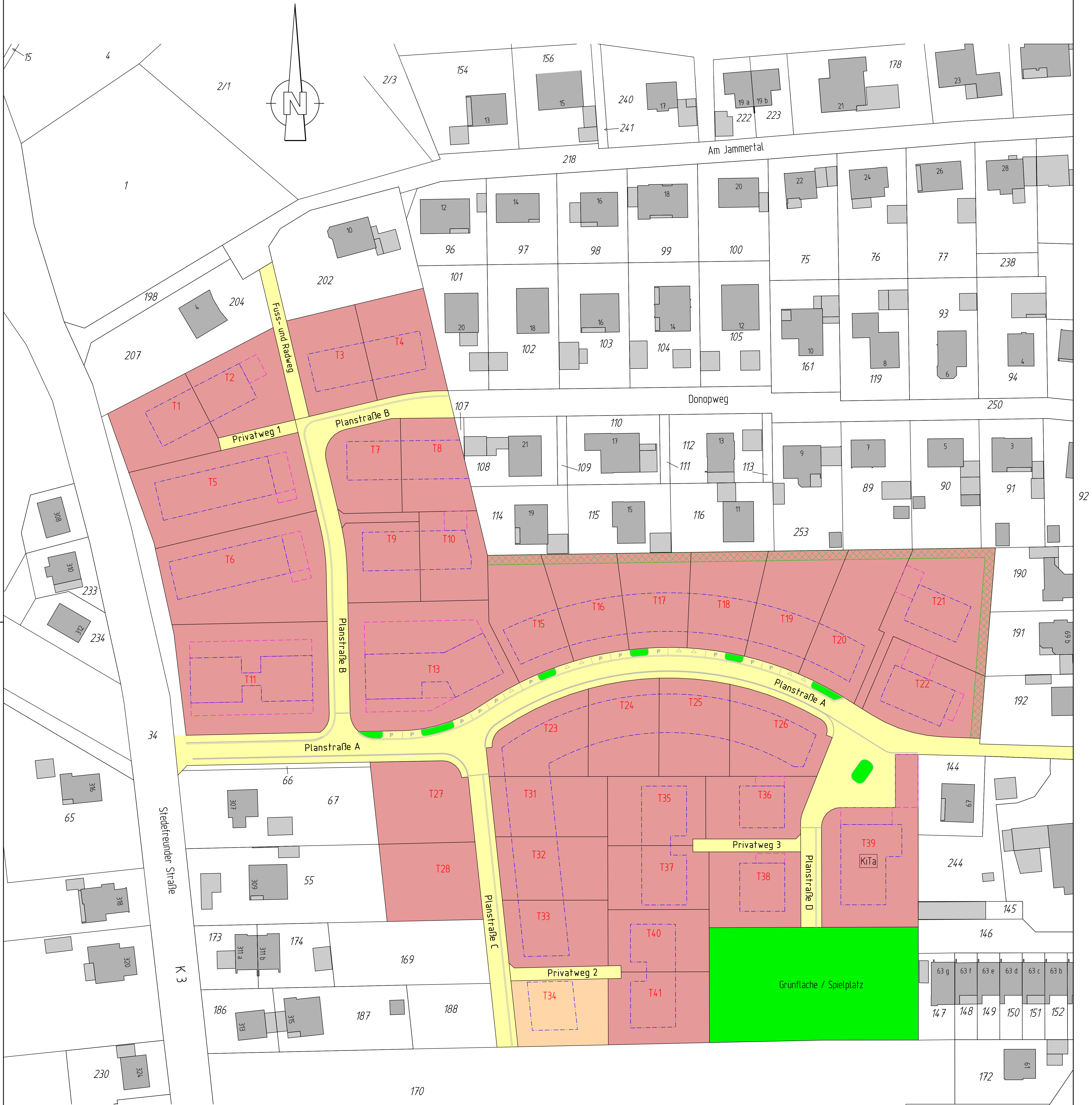
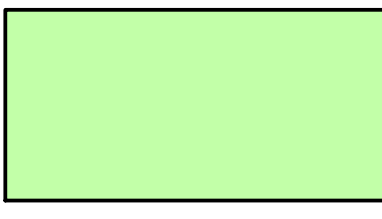

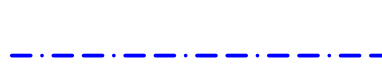
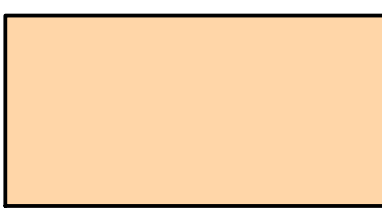
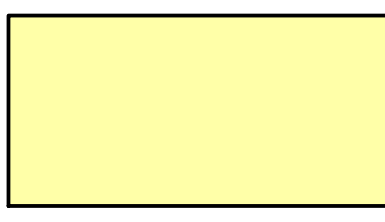

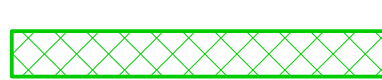


# WESERTAL

## Erschließungsgesellschaft mbH



Bebauungsplangebiet Nr. 7.68 "Stedefreunder Str./Im Obernholz" in Herford

- |   |                            |   |                          |   |                              |
|---|----------------------------|---|--------------------------|---|------------------------------|
|  | Vergübares Baugrundstück   |  | Verkauftes Baugrundstück |  | Baufenster                   |
|  | Reserviertes Baugrundstück |  | Verkehrsfläche           |  | Fläche für Nebenanlage       |
|   |                            |   |                          |  | Pflanzstreifen, Breite: 3,0m |
- Bearbeitungsstand: 02.03.2022